



Description

The motor battery YTX12A-4, 12 volt, 10 Ah, is a starter battery with AGM technology. The YTX12A-4 is already factory activated (filled and charged) and therefore ready to use at delivery. This lead-acid battery is leak-proof and maintenance free. Can be installed in tilted position up to 90°. The YTX12A-4 is a real allrounder and suitable for seasonal use and short distances.

Performance

Rated Voltage	12
Nominal Capacity	10Ah (10hr)
CCA EN	-

Dimensions / Weight

Dimensions	Length	150 mm
	Width	88 mm
	Container Height	105 mm
	Total Height	105 mm
Net. Weight	3.29 Kg	
Weight acid	0.69 Kg	
Terminal	F	
Layout	1	



Features

- Absorbent Glass Mat technology
- Advanced starting power
- Excellent vibration resistant
- 100% maintenance free
- Factory activated, ready to use!

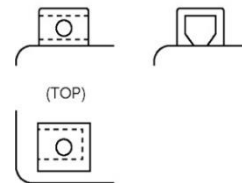
Layout

Terminal



(FRONT)

(SIDE)



(TOP)

(Note) All above information shall be changed without prior notice, Landport Batteries reserves the right to explain and update the latest information.